



AMX

Secure, Smart Multi-User
KVM Switching

For years **Avocent** has built **KVM switching solutions** that help many of the world's most successful companies reduce the complexities of growing IT infrastructures. The Avocent field-proven KVM switching and connectivity solutions provide **smarter** access and **simpler** manageability for “real world” IT environments. Our advanced KVM switching technologies continue to provide the **solutions** and the reliability you’ve come to expect from the industry leader.

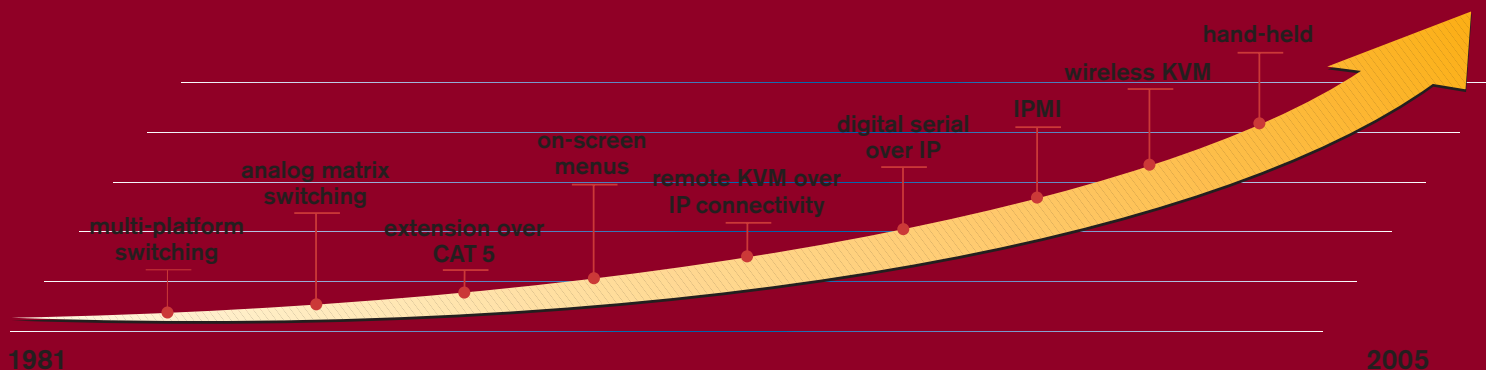
KVM Brief

KVM stands for **K**eyboard, **V**ideo and **M**ouse. A KVM solution allows multiple sets of keyboards, monitors and mice to be replaced with a single set of control peripherals. KVM technology provides easy access and control to any connected device.



OUR HISTORY OF

innovations



The AMX™ switch advances the Avocent field-proven technology and market leadership in analog matrix design by providing smarter KVM switching solutions. The AMX switch delivers powerful analog matrix switching, simple installation and advanced administrative tools to help you efficiently manage your IT environment.

The AMX switching solution provides real-time access, high quality video, smart cable management and advanced security for managing IT environments and other diverse applications. The AMX switch has advanced security features, including LDAP authentication and SNMP, enhancing our field-proven technology and market leadership in KVM analog matrix design. With LDAP authentication, the AMX switch easily integrates with Microsoft Active Directory, RADIUS and other LDAP services and uses the same username and password that exists for each user's normal network authentication. Our enhanced SNMP lets you set up traps in the AMX switch for convenient report alarms to an external logging destination.

Designed to support diverse applications, the AMX switch is the smart KVM solution for demo labs, designer environments and test labs where real-time access and high quality video are critical features. Expanding broadcast environments and leading TV networks, including FOX, ABC and CNBC, also use the AMX KVM switching solution to control access to their machine room computers and broadcast devices.

The AMX switch solution includes the AMX5000 and AMX5010 analog matrix switches, the AMIQ CAT 5 server interface module, the AMX5110 and AMX5120 user stations and the AMWorks™ Java-based system administrative software tool.



SPECIFICATIONS

MECHANICAL	Height	Width	Depth	Weight
AMX5000 Matrix Switch:	1.7" (4.3 cm)	17.2" (43.2 cm)	11.1" (28.1 cm)	9.3 lbs (3.7 kg)
AMX5010 Matrix Switch:	3.4" (8.6 cm)	17.2" (43.2 cm)	11.1" (28.1 cm)	16 lbs (7.27 kg)
AMIQ-PS2 Server Interface Module:	0.8" (2.0 cm)	1.57" (4.0 cm)	14.1" (36.0 cm)	0.8 lbs (0.3 kg)
AMIQ-USB Server Interface Module:	0.8" (2.0 cm)	2.4" (6.1 cm)	14.1" (36.0 cm)	0.8 lbs (0.3 kg)
AMIQ-VSN Server Interface Module:	0.8" (2.0 cm)	2.4" (6.1 cm)	14.1" (36.0 cm)	0.8 lbs (0.3 kg)
AMX5110 & AMX5120 User Stations:	1.74" (4.4 cm)	10.9" (27.9 cm)	11.5" (29.2 cm)	5 lbs (2.0 kg)

ENVIRONMENTAL / POWER / HARDWARE

Operating Temperature	32° (0°C) to 122° (50°C)
Storage Temperature	-4° (-20°C) to 122° (50°C)
Power Requirements	100 - 240 VAC, 50 - 60 Hz
Supported Hardware - Computer	AMIQ-PS2 Server Interface Module: IBM PC/AT, PS/2 and 100% compatibles
Supported Hardware - Video Modes	VGA, SVGA, XGA, SXGA, up to 1600 x 1200 @ 75 Hz resolution
Supported Hardware - Peripherals	AMX5110 & AMX5120 User Stations: PS/2 keyboard, PS/2 mouse, IntelliMouse (PS/2 only), Sun Type 5 and Type 6
Supported Cable Types	Unshielded twisted pair, including CAT 5, CAT 5e, CAT 6
Warranty	Two Year

ORDERING INFORMATION

AMX5000-AM	8 output ports, 32 input ports, rack mount switch
AMX5010-AM	16 output ports, 64 input ports, rack mount switch
AMIQ-PS2	Server Interface Module, VGA, PS/2 keyboard, PS/2 mouse
AMIQ-USB	Server Interface Module, VGA, USB keyboard/mouse
AMIQ-VSN	Server Interface Module, VGA or 13W3, Sun keyboard/mouse
AMIQ-SRL	Server Interface Module, VT100 serial-based devices
AMX5110-AM	Single user, CAT 5 connection, desktop user station with local PC port, no skew
AMX5120-AM	Single user CAT 5 connection, desktop user station with local PC port
AMWorks	System administration software included
UPD-AM	Power supply for serial IQ

flexible

SWITCHING SOLUTIONS



AMX5000, AMX5010, AMIQ & AMWorks



Built on the Avocent superior analog switching technology, the AMX5000 and AMX5010 matrix switches simplify management in evolving server installations. This solution has a highly scalable architecture that easily accommodates additional servers and users in growing network infrastructures. These matrix switches provide access from a single point or simultaneous access for up to 16 users throughout the data center.

The AMIQ enhanced CAT 5 server interface module is the best choice for flexibility and performance in complex IT environments. Our CAT 5 design and video technology eliminates bulky cabling connections and delivers real-time, high bandwidth video for KVM switching up to 1,000 feet away from the server. The AMIQ module has built-in memory that eases configuration by assigning and retaining unique server identification codes for each attached server. This cable intelligence enhances security and prevents unauthorized access to a server through cable manipulation.

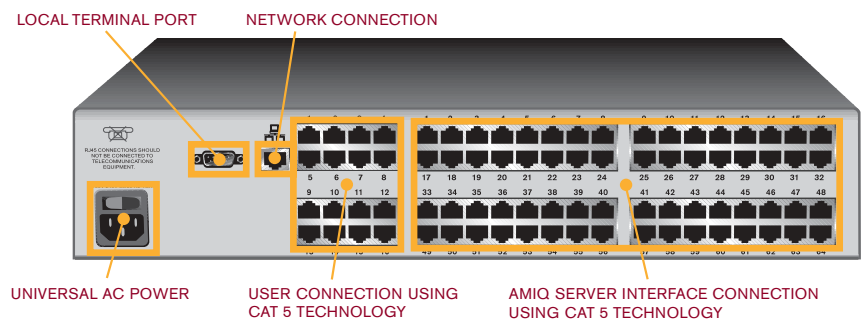
The AMX switch features our patented OSCAR® graphical user interface, which lets you conveniently switch between connected devices. If you require centralized administration of the AMX switch, AMWorks software is included free with each switch. AMWorks software supports customized user profiles and multi-level security. AMWorks software allows you to build a user database with assigned access and password protection for each server.

You can view all activities that take place on the KVM system, including user login, switches made to servers and changes made to the system connections or setup. The database is centrally stored and can be downloaded to the switch via the network connection port available on all AMX5000 and AMX5010 switches.



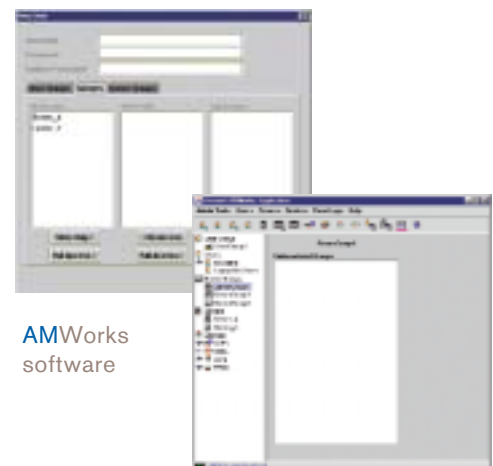
Avocent advanced switching solution provides the best combination of flexibility and optimal performance for today's growing IT installations, security-driven environments and diverse applications.

RELIABLE TECHNOLOGY, ADVANCED DESIGN



FEATURES & BENEFITS

- Access – Full non-blocked access for AMX5000 and AMX5010 switches
- Expandability/Scalability – Architecture makes it easy to add and support more servers
- Connectivity – End-to-end UTP cable, including CAT 5, CAT 5e, CAT 6
- AMIQ Server Interface Module – Assigns and stores unique server identification code for easier configuration and enhanced security
- Multi-platform – PS/2, USB, Sun server support and VT100 serial-based devices
- LDAP authentication – Authenticates against existing username/password database
- Enhanced SNMP - Sets up traps and sends alarms
- Broadcast Support - Access as securely located computers from any user environment, including the user's desk
- Flash Upgrade – Simultaneously applies flash updates for all connected devices
- AMWorks software – Easier management with our advanced Java-based system administration tool
- Event Log – AMWorks software maintains a record of user logins and switching activity



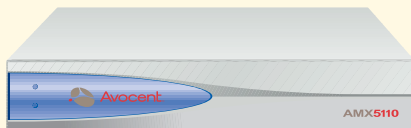
AMWorks software

simpler

SWITCHING SOLUTIONS



AMX5110 & AMX5120



The AMX5110 and AMX5120 user stations simplify access at the desk by increasing user control and delivering optimal real-time video to the user's desk. The user stations provide access from the desk to one matrix switch and one local computer. The user stations connect to the user's multi-platform KVM peripherals and sends the KVM signals over an industry standard UTP cable to the Avocent AMX5000 and AMX5010 analog matrix switches. This UTP connectivity and analog switching technology provide multi-user access and control to any server in your network. The user stations' design **automatically** compensates for varying cable types and lengths and adjusts for signal losses each time a switch is made to the server.

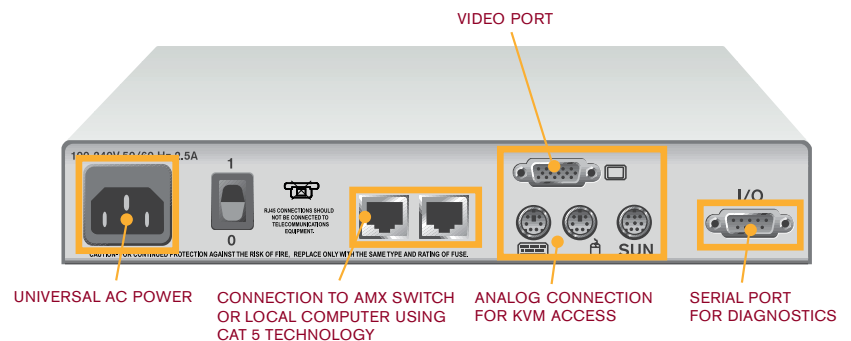
The user stations work with our patented OSCAR interface. This interface uses multi-lingual, intuitive menus for point and click system configuration and server selection. This full system management tool supports switching in share, private and scan modes.





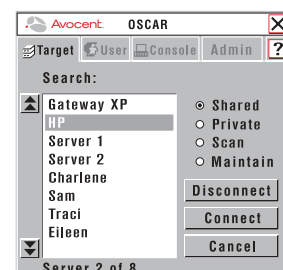
The AMX switching solution's real-time access and high quality video are major benefits in IT environments, demo labs and expanding broadcast environments.

MAXIMUM PERFORMANCE FOR "REAL WORLD" ENVIRONMENTS



FEATURES & BENEFITS

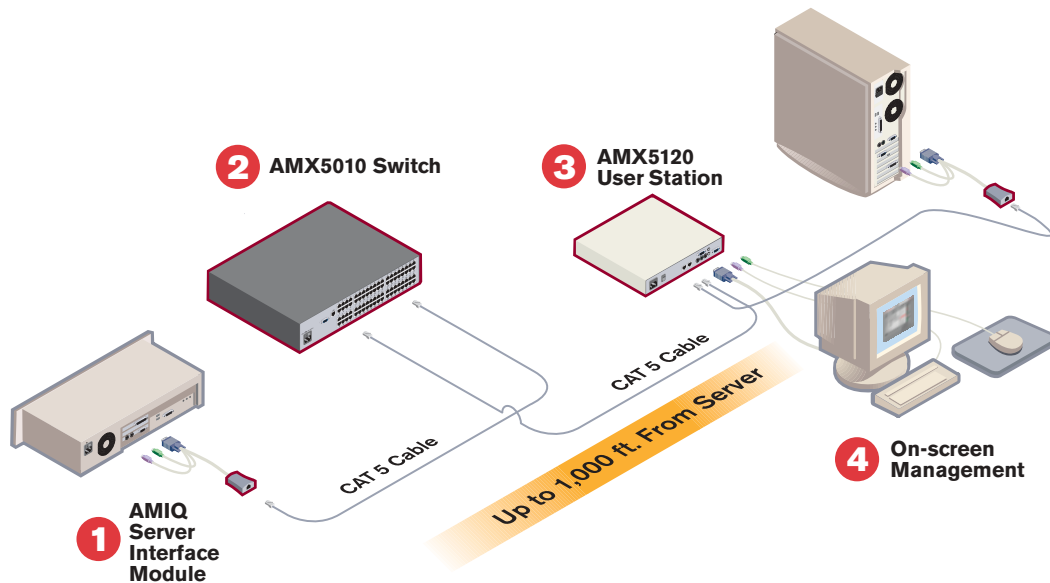
- Video Display – Optimal video resolutions up to 1280 x 1024 at 1,000 feet
- Connectivity – End-to-end UTP cable, including CAT 5, CAT 5e, CAT 6
- Compact Design – Doubles as a monitor stand with zero footprint on the desk
- Multi-platform – Supports PS/2, Sun and USB peripherals
- On-screen Management – Point and click intuitive menus with multi-lingual support
- Flash Upgrade – Simultaneously applies flash updates for all connected devices
- High Quality Video - Automatically compensates for varying cable types and lengths and adjusts for signal losses each time a switch is made to a server
- Local PC Access - User stations allow a local computer to be used for the same AMX user interface



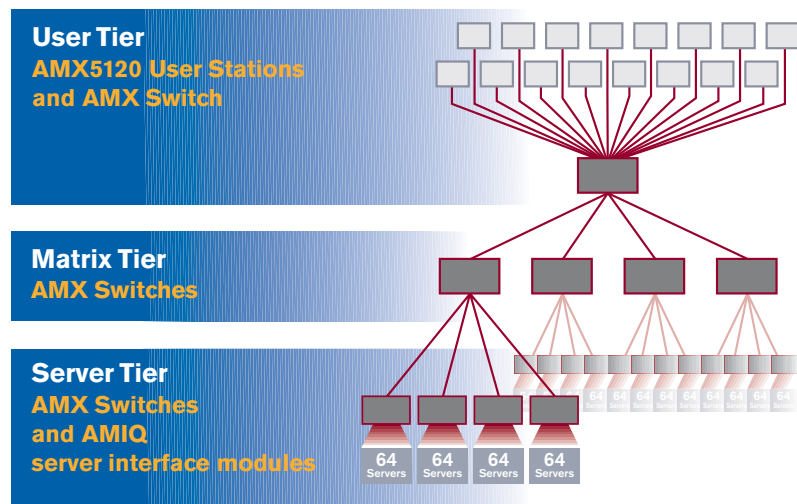
OSCAR Interface

easy INSTALLATION

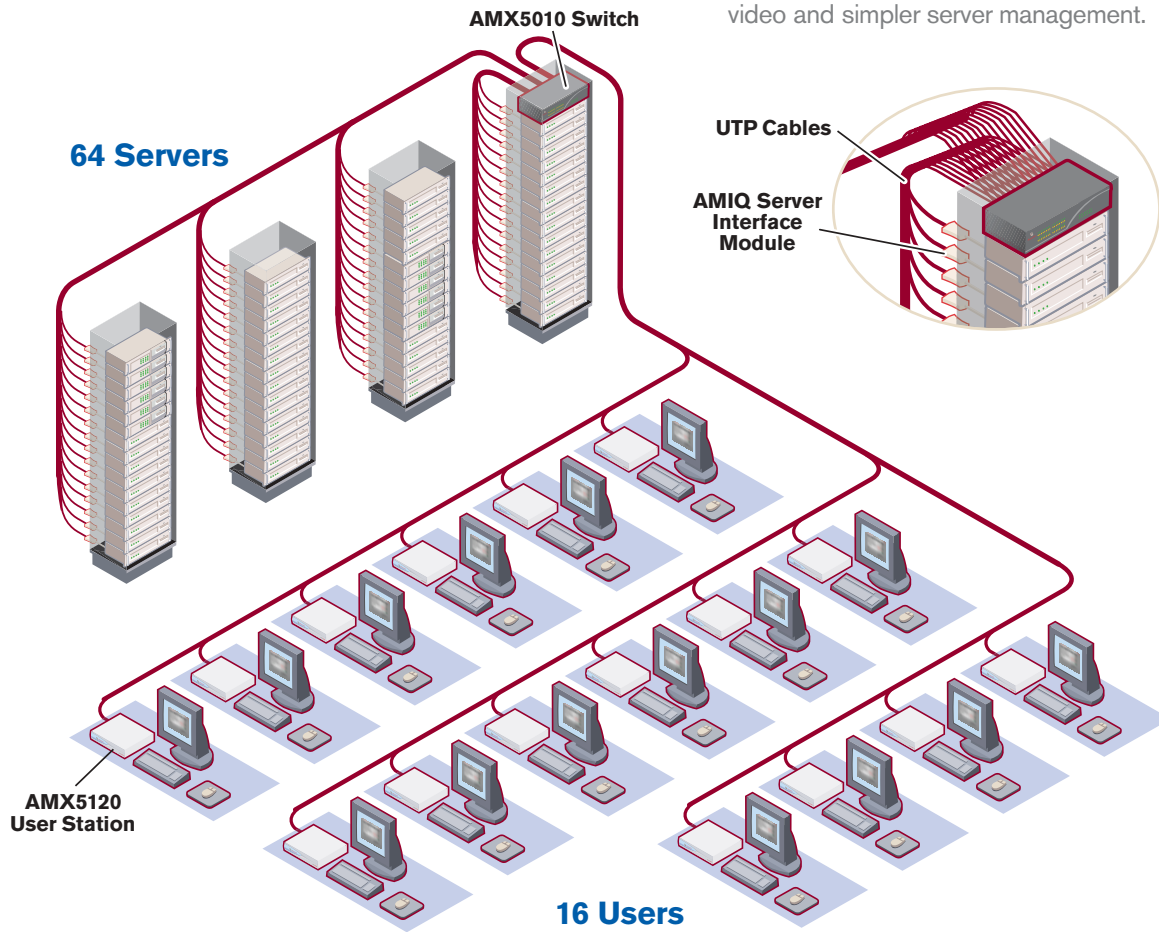
1. Connect the **AMIQ CAT 5 server interface module** to the appropriate ports on the target **server**.
2. Connect the **AMIQ CAT5 server interface module** to one of the 64 server ports on the rear of **AMX5010 matrix switch** using CAT 5 cabling.
3. Connect the **AMX5010 matrix switch** to the user connection on the rear of **AMX5120 user station** using CAT 5 cabling.
4. Connect the **user's KVM peripherals** to the KVM ports on the rear of the **AMX5120 user station**.



Expand above 64 servers by tiering AMX appliances using standard UTP connections. With tiering, it is possible to expand to as many as 4,096 servers.



Our reliable, proven technologies deliver real-time access, high quality video and simpler server management.



- END-TO-END CAT 5 CONNECTIONS
- MULTI-USER, MULTI-RACK, MULTI-PLATFORM ACCESS
- REDUCED CABLE BULK
- REAL-TIME, HIGH BANDWIDTH VIDEO
- PATENTED ON-SCREEN MANAGEMENT
- CONVENIENT SYSTEM ADMINISTRATION
- EASY INSTALLATION
- EASILY EXPANDS

simple
EXPANDABILITY



Avocent[®]
The Power of Being There[®]

Corporate Headquarters
4991 Corporate Drive, Huntsville, AL 35805
TEL 866.286.2368 FAX 256.430.4030
www.avocent.com

Avocent, the Avocent logo, The Power of Being There, AMX, AMWorks and OSCAR are trademarks or registered trademarks of Avocent Corporation or its affiliates. All other marks are the property of their respective owners. Copyright © 2005 Avocent Corporation. All rights reserved.

0105-AMX-BRO-06